

INEQUALITY (REASONING ABILITY)

SBI PO | SBI CLERK | IBPS PO | IBPS CLERK |
RBI | IBPS RRB | LIC | Insurance | etc



BEST CONTENT FOR ALL BANKING EXAMS

INEQUALITY

Directions (1-5): In these questions, relationships between different elements are shown in the statements. These statements are followed by two conclusions. Give answer

- (a) if only conclusion I follows
- (b) if only conclusion II follows
- (c) if either conclusion I or conclusion II follows
- (d) if neither conclusion I nor conclusion II follows
- (e) if both conclusions I and II follow

1. Statements: $A > L = T < R \leq H > K$

Conclusion: I. $H > L$ II. $K > T$

2. Statements: $P \geq N > D \geq G < B \leq J$

Conclusion: I. $G < P$ II. $G < J$

3. Statements: $Q \leq E < I > N = R \geq S$

Conclusion: I. $E \geq S$ II. $S \leq N$

4. Statements: $R = S \geq Y \geq M < W > O$

Conclusion: I. $Y < M$ II. $O > S$

5. Statements: $F \leq C \leq V = Z < X = U$

Conclusion: I. $V < U$ II. $Z < F$

Directions (6-10): In these questions, relationship between different elements is shown in the statements. The statements are followed by two conclusions. Give answer

- (a) if only conclusion I follows
- (b) if only conclusion II follows
- (c) if either conclusion I or conclusion II follows
- (d) if neither conclusion I nor conclusion II follows
- (e) if both conclusions I and II follow

6. Statements: $L \geq D > F, E > G \leq C = L$

Conclusion: I. $F < C$ II. $G < D$

7. Statements : $C = G < B \leq L > P = Q$

Conclusion: I. $Q < B$ II. $Q < L$

8. Statements: $M \leq N = P, M \geq T = L < Q$

Conclusion: I. $L = N$ II. $T > N$

9. Statements: $A > B \leq C = D \leq E, C \geq F = G > H$

Conclusion: I. $G \leq E$ II. $A > H$

10. Statements : $N = O \geq Q, P = M < O > B$

Conclusion: I. $N < P$ II. $Q \geq N$

Directions (11-15): In these questions, relationship between different elements is shown in the statements. These statements are followed by five conclusions. Read the statements and then decide which of the following conclusion follow from the given statements.

11. In which of the following expression will the expression ' $R \leq P$ ' does not hold true?

(a) $R \leq T = M \leq P \leq S$

(b) $T > Q = P \geq L \geq M = R$ (c) $M < P = S \geq Q = R$

(d) $P < T \geq S = O \geq R = K$ (e) $R \leq S = T \leq P < Q$

12. In which of the following expressions will the expression ' $Q < R$ ' does not hold true?

(a) $P \geq Q \leq N < S \leq T = R$

(b) $P < Q > T \geq N > S = R$ (c) $P \leq Q < N \leq S \leq T = R$

(d) $P \leq Q \leq S \leq N \leq T < R$ (e) $P > Q < T < N \leq S < R$

13. In which of the following expressions will the expression. ' $M > R$ ' Definitely be true?

(a) $M > N \geq P < R \leq O$ (b) $R \leq P = N < M \leq O$

(c) $R \leq N = P < O \leq M$

(d) $O \leq R < N > M = P$ (e) Both b and c

14. which of the following expressions will be true if the given expression ' $A > B \geq C < D < E$ ' is definitely true?

(a) $A > D$ (b) $E \geq C$ (c) $B \geq D$

(d) $A > C$ (e) $B > E$

15. If the expressions, ' $P < Q \leq R > S$ ', ' $R \geq T$ ' and ' $N \geq Q$ ' are true then which of the following combinations will be definitely true?

(a) $N = R$ (b) $P < N$ (c) $T = N$

(d) $P < S$ (e) None of these

Directions (16-20): In the following questions, the symbols \$, @, #, © and * are used with the following meaning as illustrated below.

'P * Q' means 'P is neither greater than nor smaller than Q'

'P \$ Q' means 'P is neither greater than nor equal to Q'

'P @ Q' means 'P is not smaller than Q'

'P © Q' means 'P is not greater than Q'

'P # Q' means 'P is neither smaller than nor equal to Q'

Now in each of the following questions assuming the given statements to be true, which of the three conclusions I, II and III given below them is/are definitely true and given your answer accordingly.

16. Statements: W @ T, T © M, M \$ D

Conclusions:

I. W # D II. W @ D III. D # T

- (a) Only I is true
- (b) Only II is true
- (c) Only III is true
- (d) II and III are true
- (e) None of these

17. Statements: F * R, R © M, M \$ D

Conclusions

I. D # R II. D # F III. M @ F

- (a) I and II are true
- (b) I and III are true
- (c) II and III are true
- (d) All are true
- (e) None of these

18. Statements: V © M, M * B, B \$ F

Conclusions

I. F # M II. B @ V III. F # V

- (a) I and II are true
- (b) II and III are true
- (c) I and III are true
- (d) All are true

(e) None of these

19. Statements: $D \# N$, $N @ B$, $B * F$

Conclusions

I. $F \$ D$ II. $N \# F$ III. $N * F$

- (a) Only I is true
 (b) Only II is true
 (c) Only III is true
 (d) Only either II or III are true
 (e) Only I and either II or III are true

20. Statements: $R \$ T$, $T \# K$, $K @ M$

Conclusions

I. $R \$ M$ II. $T \# M$ III. $R \$ K$

- (a) None is true
 (b) Only I is true
 (c) Only II is true
 (d) Only III is true
 (e) II and III are true

Directions (21–25): In the following questions, the symbols @, #, %, \star and \$ are used with the following meanings as illustrated below:

'R @ S' means 'R is not smaller than S'

'R # S' means 'R is not greater than S'

'R % S' means 'R is neither greater than nor equal to S'

'R \star S' means 'R is neither smaller nor greater than S'

'R \$ S' means 'R is neither smaller than nor equal to S'

In each of the following questions, assuming the given Statements to be true, find out which of the three conclusions I, II and III given below them is/are definitely true.

21. Statements : $N \% I$, $I \# G$, $G \star M$

Conclusion: I. $M \star I$ II. $M \$ I$ III. $M \$ N$

- (a) All are true
 (b) Only either I or II is true
 (c) Only either I or II, and III are true
 (d) Both II and III are true

(e) None of these

22. Statements : Q # M, K @ M, G \$ K

Conclusion: I. Q % G II. G \$ M III. M @ Q

- (a) None is true
 (b) Only I and II are true
 (c) Only I and III are true
 (d) Only II and III are true
 (e) All are true

23. Statements : Y ☆ W, W @ S, S % U

Conclusion: I. Y ☆ U II. Y \$ U III. W \$ U

- (a) Either I or II is true
 (b) Only III is true
 (c) Only either I or II, and III are true
 (d) None is true
 (e) All are true

24. Statements : T \$ P, P # S, S ☆ M

Conclusion: I. M ☆ P II. M % T III. M \$ P

- (a) All are true
 (b) Only either I or II is true
 (c) Only II is true
 (d) Only either I or III is true
 (e) None of these

25. Statements : E @ W, Z \$ W, I # E

Conclusion: I. I # Z II. E @ Z III. I \$ W

- (a) Only I is true
 (b) Only II is true
 (c) Only III is true
 (d) None is true
 (e) All are true

Direction (26-30): In the following questions, the symbols #, \$, %, ?, and @ are used with the following meaning as illustrated below:

'Q # P' means 'Q is not greater than P'.

'Q \$ P' means 'Q is neither smaller than nor equal to P'.

'Q % P' means 'Q is neither smaller nor greater than P'

'Q ? P' means 'Q is neither greater than nor equal to P'.

'Q @ P' means 'Q is not smaller than P'.

Now in each of the following questions, assuming the given Statements to be true, find which of the two conclusions I and II given below them is/are definitely true and give your answers accordingly. Mark answer

- (a) If only conclusion I is true.
 (b) If only conclusion II is true.
 (c) If either conclusion I or II is true.
 (d) If neither conclusion I nor II is true.
 (e) If both conclusions I and II are true.

26. Statements : Z # Y, Y % X, X ? W

Conclusion: I. X @ Z II. Z # W

27. Statements : K \$ J, J @ H, H % I

Conclusion: I. K @ III. I \$ J

28. Statements : D ? C, C # B, B \$ A

Conclusion: I. D ? A II. D @ A

29. Statements : T @ S, S \$ Q, Q % P

Conclusion: I. P ? T II. Q ? T

30. Statements : M @ N, N \$ K, K # G

Conclusion: I. G # M II. K ? M

Directions (31–35): In these questions relationship between different elements is shown in the Statements. These Statements are followed by conclusions. You have to find out which of the conclusions logically follows from the given Statements.

31. Statements : $X \leq Y$, $Y \geq W$, $W < P$, $P \leq M$

Conclusion: I. $M > W$ II. $P > X$ III. $X \leq M$

- (a) Only I follows

- (b) Only II follows
- (c) Only III follows
- (d) Only I and III follow
- (e) None of these

32. Statements : $P \geq Q$, $N \leq S, Q > N$, $S < T$

Conclusion: I. $T > Q$ II. $P \geq S$

III. $Q > T$ IV. $P > N$

- (a) Only I and II follow
- (b) Only I, II and III follow
- (c) Only III and IV follow
- (d) Only II, III and IV follow
- (e) None of these

33. Statements : $C < Q$, $Q \leq J, J > E, E \geq I$

Conclusion: I. $J < Q$ II. $I < J$

III. $Q < E$ IV. $J > C$

- (a) Only I, II and III follow
- (b) Only II, III and IV follow
- (c) Only I, III and IV follow
- (d) All I, II, and IV follow
- (e) None of these

34. Statements : $X \geq Y = Z \leq A < B > C$

Conclusion: I. $C < Z$ II. $B < Y$

- (a) Only I follows
- (b) Only II follows
- (c) Either I or II follows
- (d) Neither I nor II follow
- (e) Both I and II follow

35. Statements : $P < Q \leq R < S < T$

Conclusion: I. $R \leq P$ II. $T > R$

- (a) Only I follows
- (b) Only II follows
- (c) Only either I or II follows
- (d) both follows

(e) none follows

Directions (36-40): In these questions, relationships between different elements are shown in the Statements. These Statements are followed by two conclusions. Give answer:

- (a) If only conclusion I follows
 (b) If only conclusion II follows
 (c) If either conclusion I or conclusion II follows
 (d) If neither conclusion I nor conclusion II follows
 (e) If both conclusions I and II follow

36. Statements : $A > L = T < R \leq H > K$

Conclusion: I. $H > L$ II. $K > T$

37. Statements : $P \geq N > D \geq G < B \leq J$

Conclusion: I. $G < P$ II. $G < J$

38. Statements : $Q \leq E < I > N = R \geq S$

Conclusion: I. $E \geq S$ II. $S \leq N$

39. Statements : $R = S \geq Y \geq M < W > O$

Conclusion: I. $Y < M$ II. $O > S$

40. Statements: $F \leq C \leq V = Z < X = U$

Conclusion: I. $V < U$ II. $Z < F$

Directions (41-45) In the following questions, the symbols #, \$, %, © and @ are used with the following meanings as illustrated below.

'A & B' means 'A is not smaller than B'.

'A \$ B' means 'A is neither greater than nor equal to B'

'A % B' means 'A is not greater than B'

'A © B' means 'A is neither smaller than nor greater than B'

'A @ B' means 'A is neither smaller than nor equal to B'

In each of the following questions assuming the given statements to be true, find out which of the two conclusions I and II given below them is/are definitely true.

Give answer (a): If only conclusion I is true.

Give answer (b): If only conclusion II is true.

Give answer (c): If either conclusion I or II is true.

Give answer (d): If neither conclusion I nor II is true.

Give answer (e): If both conclusions I and II are true.

41. Statements

H © W, W % R, R @ F

Conclusions

I. R © H

II. R @ H

42. Statements

M \$ T, T @ K, K © D

Conclusions

I. D \$ T

II. K \$ M

43. Statements

R % N, N & F, F @ B

Conclusions

I. F © R

II. B \$ N

44. Statements

H @ W, W \$ M, M & K

Conclusions

I. K \$ W

II. H @ M

45. Statements

R & T, T © M, M @ D

Conclusions

I. D \$ T

II. R & M

Directions (46-50): In the following questions, the symbols @, \$, *, # and δ used with the following meaning as illustrated below:

'P \$ Q' means 'P is not smaller than Q'

'P@Q' means 'P is neither smaller than nor equal to Q'

'P # Q' means 'P is neither greater than nor equal to Q'

'P δ Q' means "P is neither greater than nor smaller than Q"

'P *Q' means 'P is not greater than Q'

Now, in each of the following questions assuming the given statements to be true, find which of the four conclusions I, II, III and IV given below them is/are definitely true and give your answer accordingly.

46. Statements: A δ B, B \$ W, W # H, H* M

Conclusions: I. M @ W

II. H@ A

III. $W \delta A$

IV. $W \# A$

- (a) Only I is true
- (b) Only III is true
- (c) Only IV is true
- (d) Only either III or IV is true
- (e) Only either III or IV and I are true

47. **Statements:** $C * D, D \$ J, J \# M, M @ K$

Conclusions: I. $K \# J$

II. $D @ M$

III. $C \# M$

IV. $D @ K$

- (a) None is true
- (b) Only I is true
- (c) Only II is true
- (d) Only III is true
- (e) Only IV is true

48. **Statements:** $W @ T, T \# F, F \delta E, E * V$

Conclusions: I. $V \$ F$

II. $E @ T$

III. $W @ V$

IV. $T \# V$

- (a) Only I, II and III are true
- (b) Only I, II and IV are true
- (c) Only II, III and IV are true
- (d) Only I, III and IV are true
- (e) All I, II, III and IV are true

49. **Statements:** $B \# R, R * K, K @ F, F \$ J$

Conclusions: I. $J \# R$

II. $J \# K$

III. $R \# F$

IV. $K @ B$

- (a) Only II and III are true
- (b) Only III and IV are true
- (c) Only I, III and IV are true
- (d) All I, II, III and IV are true
- (e) Only II and IV are true.

50. **Statements:** $Z \$ K, K @ N, N * R, R \# W$

- Conclusions:** I. W @ K
 II. Z \$ R
 III. K @ W
 IV. Z @ N
 (a) Only I and II are true
 (b) Only I is true
 (c) Only III and IV are true
 (d) Only III is true
 (e) Only IV is true

SOLUTIONS

Directions (1-5)

1. (a); I. $H \geq R > T = L$ [True]
 II. $T < R \leq H > K$ [False]
2. (e); I. $G \leq D < N \leq P$ [True]
 II. $G < B \leq J$ [True]
3. (b); I. $E < I > N = P \geq S$ [False]
 II. $N = R \geq S$ [True]
4. (d); I. $Y \geq M$ [False]
 II. $S \geq Y \geq M < W > O$ [False]
5. (a); I. $V = Z < X = U$ [True]
 II. $F \leq C \leq V = Z$ [False]

Direction (6-10)

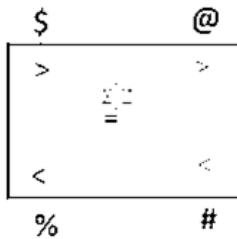
6. (a); I. $C \geq D > F$ (TRUE)
 II. $D \leq L = C \geq G$ (FALSE)
7. (b); I. $B \leq L > P = Q$ (FALSE)
 II. $L > P = Q$ (TRUE)
8. (d); I. $N \geq M \geq T = L$ (FALSE)
 II. $N \geq M \geq T$ (FALSE)
9. (a); I. $E \geq D = C \geq F = G$ (TRUE)
 II. $A > B \leq C \geq F = G > H$ (FALSE)
10. (b); I. $P = M < O = N$ (FALSE)
 II. $N = O \geq Q$ (TRUE)

Direction (11-15)

11. (d); $[P < T \geq S = O \geq R = K]$
12. (b); $[P < Q > T \geq N > S = R]$
13. (e); $[R \leq N = P < O \leq M]$ and $[R \leq P = N < M \leq O]$
14. (d); $A > C$
15. (b); $P < N$

Directions (16-20)

16. (c);
 17. (d);
 18. (d);
 19. (e);
 20. (c);

Directions (21-25)

21. (c);
 22. (e);
 23. (d);
 24. (d);
 25. (d);

Direction (26-30)

26. (a);
 27. (d);
 28. (c);
 29. (e);
 30. (b);

Directions (31-35)

31. (a);
 32. (e); (only IV follows)
 33. (e); (II and IV follows)
 34. (d);
 35. (b);

Directions (36–40)

36. (a); I. $H > L$ [True] II. $K > T$ [False]
 37. (e); I. $G < P$ [True] II. $G < J$ [True]
 38. (b); I. $E \geq S$ [False] II. $S \leq N$ [True]
 39. (d); I. $Y < M$ [False] II. $O > S$ [False]
 40. (a); I. $V < U$ [True] II. $Z < F$ [False]
41. (c) I. $R \geq W = H$ (False) II. $R \geq W = H$ (False)
 42. (a) I. $D = K < T$ (True) II. $K < T > M$ (False)
 43. (b) I. $F \leq N \geq R$ (False) II. $B < F \leq N$ (True)
 44. (d) I. $K \leq M > W$ (False) II. $H > W < M$ (False)
 45. (e) I. $D < M = T$ (True) II. $R \geq T = M$ (True)
 46. (e) I. $M @ W$ (True) II. $H @ A$ (False)
 III. $W \delta A$ (False) IV. $W \# A$ (False)
 47. (a) I. $K \# J$ (False) II. $D @ M$ (False)
 III. $C \# M$ (False) IV. $D @ K$ (False)
 48. (b) I. $V \$ F$ (True) II. $E @ T$ (True)
 III. $W @ V$ (False) IV. $T \# V$ (True)
 49. (e) I. $J \# R$ (False) II. $J \# K$ (True)
 III. $R \# F$ (False) IV. $K @ B$ (True)
 50. (e) I. $W @ K$ (False) II. $Z \$ R$ (False)
 III. $K @ W$ (False) IV. $Z @ N$ (True)

- [Click here to Join Telegram Group](#)
- [Click here to Join Whatsapp Group](#)

[Click here to Buy Online Test Series](#)

2022 Preparation Kit PDF

Most important PDF's for Bank, SSC, Railway and Other Government Exam :
Download PDF Now

AATMA-NIRBHAR Series- Static GK/Awareness Practice Ebook PDF	Get PDF here
The Banking Awareness 500 MCQs E-book Bilingual (Hindi + English)	Get PDF here
AATMA-NIRBHAR Series- Banking Awareness Practice Ebook PDF	Get PDF here
Computer Awareness Capsule 2.0	Get PDF here
AATMA-NIRBHAR Series Quantitative Aptitude Topic-Wise PDF 2020	Get PDF here
Memory Based Puzzle E-book 2016-19 Exams Covered	Get PDF here
Caselet Data Interpretation 200 Questions	Get PDF here
Puzzle & Seating Arrangement E-Book for BANK PO MAINS (Vol-1)	Get PDF here
ARITHMETIC DATA INTERPRETATION 2.0 E-book	Get PDF here

ambitious baba.com

[Click here to Join Bank & Insurance Yearly Test Series Subscription for all upcoming Banking examinations](#)

Complete list of Test Series covered in the "Bank & Insurance Yearly Test Series Subscription" are given below:

Exam Covered	Number of Mock Tests	Exam Covered	Number of Mock Tests
SBI PO Prelims	15	NIACL AO Prelims	15
SBI PO Mains	10	NIACL AO Mains	10
SBI Clerk Prelims	15	Reasoning Section-Wise	30
SBI Clerk Mains	10	Quantitative Aptitude Section-Wise	30
IBPS RRB PO Prelims	15	English Section-Wise	30
IBPS RRB PO Mains	10	Topic-Wise (Quantitative Aptitude)	15
IBPS RRB Clerk Prelims	15	Arithmetic Data Interpretation	10
IBPS RRB Clerk Mains	10	Caselet DI	10
IBPS PO Prelims	15	Memory Based Mock (Prelims)	10
IBPS PO Mains	10	Banking Awareness	15
IBPS Clerk Prelims	15	Static Awareness (GK)	15
IBPS Clerk Mains	10	Hindi Language for RRB	20
RBI Assistant Prelims	15	Computer Awareness	20
RBI Assistant Mains	10	Current Affairs (Weekly Tests)	50
LIC AAO Prelims	15	Topic Wise General Awareness Capsule Tests (Mains exam only)	15 (for Each Exam)
LIC AAO Mains	10	Other Banking Exams (Excepts SO)	
LIC Assistant Prelims	15	SBI Apprentice	10
LIC Assistant Mains	10		

BANK & INSURANCE YEARLY SUBSCRIPTION

This package is subscription for All Banking and Insurance Examination with 1 year validity.



ALL EXAM Covered

IBPS, SBI, RBI, NABARD, SEBI, NIACL, UIIC, NICL, OICL etc.

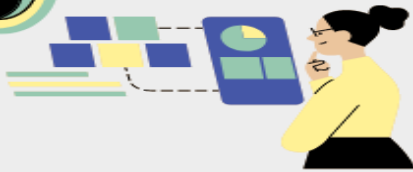
LATEST PATTERN

All the content available in the Test Series are Updated and New Pattern.



Detailed Solution

Provided the Detailed Explanation of Each and Every Questions.



24/7 Access

You can access it anytime , Anywhere 24/7 through Web or Mobile APP.



Complete Analysis

You can Analyse your Mock Test Report and Compare with the topper also.



All Level Covered

Prelims & Mains both the exams are covered in this package. its 1 stop Solution.



VISIT: TEST.AMBITIOUSBABA.COM

One Stop Solutions for all your exams and Provide the best path for your Success.