



LIC AAO

Memory Based Paper 2019

Download PDF

Visit: ambitiousbaba.com

LIC AAO PRE- Memory based Reasoning 5th May 2019

D (1-5): In each of the question below are given some statements followed by some conclusions. You have to take the given statements to be true even if they seem to be at variance with commonly known facts. Read all the conclusions and then decide which of the given conclusions logically follows from the given statements, disregarding commonly known facts.

Q1. Statements:

All banks are shops.

Some houses are shops.

Some houses are miracles.

Conclusions:

I. Some miracles are shops is a possibility.

II. Some banks are houses is a possibility

(a) If only conclusion I follows.

(b) If only conclusions II follows.

(c) If either conclusion I or II follows.

(d) If neither conclusion I nor II follows.

(e) If both conclusion I and II follow

Q2. Statements:

Some cups are not bolts.

All dusters are balls.

All cups are balls.

Conclusions:

I. All bolts are cups.

II. Some dusters are cups is a possibility. Statements :

(a) If only conclusion I follows.

(b) If only conclusions II follows.

(c) If either conclusion I or II follows.

(d) If neither conclusion I nor II follows.



Visit: ambitiousbaba.com | If any query reach us at: ambitiousbaba1@gmail.com

(e) If both conclusion I and II follow.

Q3. Statements:

All clocks are rocks.

No calendar is a mock.

Some clocks are calendars.

Conclusions:

I.No clock is a mock.

II.Some rocks are clocks

(a) If only conclusion I follows.

(b) If only conclusions II follows.

(c) If either conclusion I or II follows.

(d) If neither conclusion I nor II follows.

(e) If both conclusion I and II follow.

Q4. Statements:

No leopard is a cheetah.

Some cheetahs are tigers.

All tigers are lions.

Conclusions:

I. Some leopards are not tigers.

II. All leopards are tigers.

(a) If only conclusion I follows.

(b) If only conclusions II follows.

(c) If either conclusion I or II follows.

(d) If neither conclusion I nor II follows.

(e) If both conclusion I and II follow.

Q5. Statements:

All Greeks are Romans.

Some Romans are Tandas.

Some Gangus are Tandas.

Conclusions:

I. Some Romans are Tandas.

II. All Greeks are Gangus.

(a) If only conclusion I follows.

(b) If only conclusions II follows.

(c) If either conclusion I or II follows.

(d) If neither conclusion I nor II follows.

(e) If both conclusion I and II follow.

Directions (6-10): In these questions relationship between different elements is shown in the statements. These statements are followed by conclusions. You have to find out which of the conclusions follow or not from the given statements.

Q6. Statements: $D > A$, $F = E \leq B$, $D > B$, $C < B$

Conclusions I. $F > D$

II. $D \geq F$

- (a) Only I is true
- (b) Only II is true
- (c) Either I or II is true
- (d) Both I and II are true
- (e) Neither I nor II is true

Q7. Statements: $A > Z < B \geq C > X < D$

Conclusions I. $X > Z$

II. $B > X$

- (a) Only I is true
- (b) Only II is true
- (c) Either I or II is true
- (d) Both I and II are true
- (e) Neither I nor II is true

Q8. Statements: $A > B$, $C \leq B$, $D > E = B$, $E < F$, $G \leq B$

Conclusions I. $A > C$

II. $C < D$

- (a) Only I is true
- (b) Only II is true
- (c) Either I or II is true
- (d) Both I and II are true
- (e) Neither I nor II is true

Q9. Statements: $X > Y \geq Z = M > A \geq B$

Conclusions I. $B < Y$

II. $B \geq Y$

- (a) Only I is true
- (b) Only II is true
- (c) Either I or II is true
- (d) Both I and II are true
- (e) Neither I nor II is true

Q10. Statements: $P < Q > R = Z < S \leq X < T$

Conclusions I. $P < Z$

II. $P \geq R$

- (a) Only I is true
- (b) Only II is true
- (c) Either I or II is true
- (d) Both I and II are true
- (e) Neither I nor II is true

D (11-13): Study the following information carefully and answer the questions given below:
Point P is 20m west of point Q. Point Q is 25m north of point S. Point R is 35m east of point S. Point U is 40 m north of point R. Point V is south of point U and lies in the east of point Q. Point Z is 45 west of point V. Point M is 25 m south of point Z.

Q11. what is the shortest distance between V and R?

- (a) 20m
- (b) 25m
- (c) 30m
- (d) 45m
- (e) None of these

Q12. Four of the following five belongs to a group find the one that does not belongs to that group?

- (a) Q,R
- (b) P,M
- (c) Q,S
- (d) V,S
- (e) S,U

Q13. In which direction and at what distance is point Q is in with respect to point V?

- (a) 30m east
- (b) 35m west
- (c) 30m east
- (d) 40m west
- (e) None of these

Q14. How many such digits which gets repeated in the number '41632857' when 1 is subtracted from the even numbers and two is added to the odd numbers?

- (a) None
- (b) One
- (c) Two
- (d) Three
- (e) More than three

SOLUTIONS

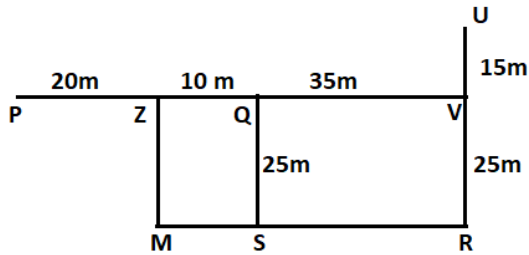
- Ans. 1. (e)
- Ans. 2. (b)
- Ans. 3. (b)
- Ans. 4. (c)
- Ans. 5. (a)

- Ans. 6. (e)
- Ans. 7. (b)
- Ans. 8. (d)
- Ans. 9. (a)
- Ans. 10. (c)

D (11-13):



Sol.



Ans.11.(b)

Ans.12.(c)

Ans.13.(b)

Ans.14. (d)

Explanation

41632857 – 33551779

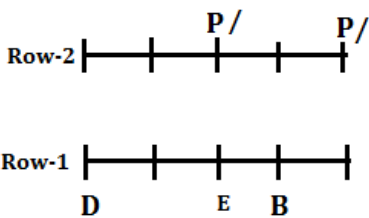
D (15-20) Study the following information carefully and answer the questions given below:

Ten persons are A, B, C, D, E, P, Q, R, S, T are sitting in two parallel rows such that A, B, C, D, E sits in row 1 faces towards north direction and P, Q, R, S and T sits in the row 2 such that all are facing south direction. Person sitting in the row 1 faces the person sitting in row 2. B sits third to the right of D and one of them sit at an extreme end. P is an immediate neighbor of the one who faces B. Only one person sit between P and R. Q is not an immediate neighbor of P. The one who faces R is an immediate neighbor of A. C faces Q. Only one person sit between the one who faces A and S. T is to the right of Q. E sits to the immediate left of B.

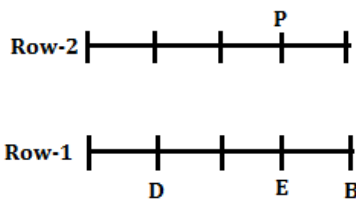
Solutions:

B sits third to the right of D and one of them sit at an extreme end. P is an immediate neighbor of the one who faces B. E sits to the immediate left of B. So, from this there will be two possible cases--

Case-1:

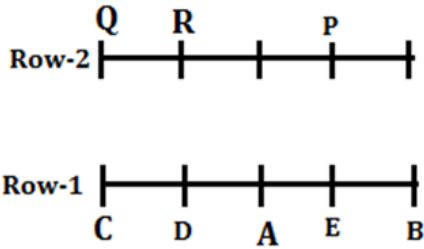


Case-2:

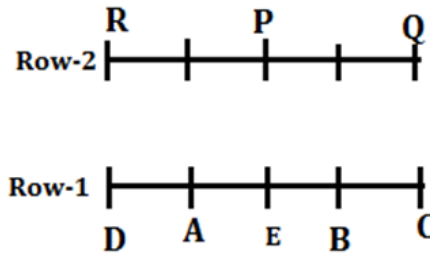


Only one person sit between P and R. The one who faces R is an immediate neighbor of A. C faces Q. Q is not an immediate neighbor of P. So, now we get two possible cases—

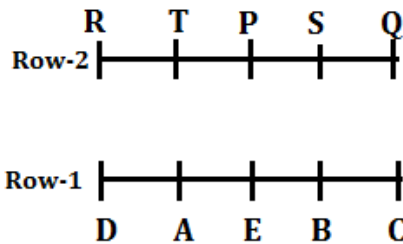
Case-1:



Case-2:



Only one person sit between the one who faces A and S. T is to the right of Q. So, case-1 gets eliminated. So, the final arrangement is----



D (21-25): Study the following information carefully and answer the questions given below:

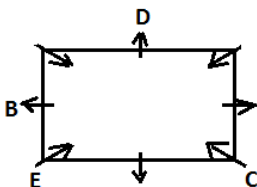
There are eight friends i.e. A, B, C, D, E, F, G and H who all sits around a square table such that four of them sit at the four corners and face towards the centre and other four sit on the middle of the side who faces outside.

B sits third to the left of C, who sits second to the right of E. Only two persons sits between E and D. B does not sits opposite to D. G sits second to the right of F. G is not the immediate neighbour of D. A is not the immediate neighbour of B. H does not face outside the centre of the table.

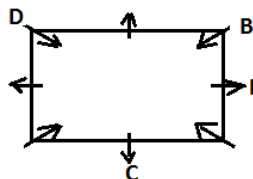
Solutions:

B sits third to the left of C, who sits second to the right of E. Only two persons sits between E and D. B does not sits opposite to D.

Case 1:

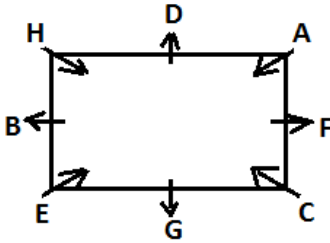


Case 2:



G sits second to the right of F. G is not the immediate neighbour of D. A is not the immediate neighbour of B. H does not face outside the centre of the table. So, case 2 will be eliminated.

Case 1:



D (26-30): Study the following information carefully and answer the questions given below:
 Eight persons P, Q, R, S, T, U, V, W born in different months from January to August of a year. U born in a month having 31 days. Three persons born in between U and T. V born in a month immediately before P. Only two persons born between P and R. R born in a month having 31 days. W born before S but none of them born in a month having least number of days. T was not born before W. Q was born in one of the months after W but does not born after T. Not more than four persons born in between Q and U. U does not born in a month immediately before V.

Solutions:

U born in a month having 31 days. Three persons born in between U and T. V born in a month immediately before P. Only two persons born between P and R. R born in a month having 31 days.

Months	Case-1	Case-2	Case-3	Case-4
January (31)	U/T		V	
February (28/29)			P	
March (31)	V	U/T		R
April (30)	P	V	T	T
May (31)	T/U	P	R	V
June (30)				P
July (31)	R	T/U		
August (31)		R	U	U

W born before S but none of them born in a month having least number of days.

Months	Case-1	Case-2	Case-3	Case-4
January (31)	U/T	W	V	W
February (28/29)	Q	Q	P	Q
March (31)	V	U/T	W/	R
April (30)	P	V	T	T
May (31)	T/U	P	R	V
June (30)	W	S	W/S/	P
July (31)	R	T/U	S/	S
August (31)	S	R	U	U

T was not born before W. From this case-1 gets eliminated. Q was born in one of the months after W but does not born after T. From this case-3 gets eliminated.

[Facebook Page](#)

[Facebook Group](#)

[Telegram Group](#)

[Telegram Channel](#)

Months	Case-2	Case-4
January (31)	W	W
February (28/29)	Q	Q
March (31)	U/T	R
April (30)	V	T
May (31)	P	V
June (30)	S	P
July (31)	T/U	S
August (31)	R	U

Not more than four persons born in between Q and U. So, from this case-4 gets eliminated. U does not born in a month immediately before V. So, the final arrangement is----

Months	Persons
January (31)	W
February (28/29)	Q
March (31)	T
April (30)	V
May (31)	P
June (30)	S
July (31)	U
August (31)	R

- [SBI Clerk Prelims 2019 Mock Test Papers : Download PDF](#)
- [LIC AAO 2019 : Insurance Awareness and Financial Market E-Book \(Bilingual\) Hindi+English Download PDF](#)
- [More Daily Current Affairs Click here](#)
- [Get Free PDFs](#)
- [Banking Awareness Study Notes](#)

SBI PO/Clerk 2019 Preparation Kit PDF

I challenge you will get Best Content in Our PDFs with Detail solutions and Latest Pattern

Memory Based Puzzle E-book | 2016-19 Exams Covered

[Get PDF here](#)

Caselet Data Interpretation 200 Questions

[Get PDF here](#)

Puzzle & Seating Arrangement E-Book for BANK PO MAINS (Vol-1)

[Get PDF here](#)



[Facebook Page](#)

[Facebook Group](#)

[Telegram Group](#)

[Telegram Channel](#)

ARITHMETIC DATA INTERPRETATION 2019 E-book	Get PDF here
The Banking Awareness 500 MCQs E-book Bilingual (Hindi + English)	Get PDF here
High Level DATA INTERPRETATION Practice E-BOOK	Get PDF here

- [WhatsApp Group Join here](#)
- **Telegram Group:-** [Click Here](#)
- **Telegram Channel:** [Click here](#)
- **Like & Follow our Facebook Page:-** [Click here](#)
- **Join our Facebook Group:-** [Click Here](#)